



Weekly Newsletter

The Tweeddales



Tweeddale Primary School
Tuesday 1st February 2011

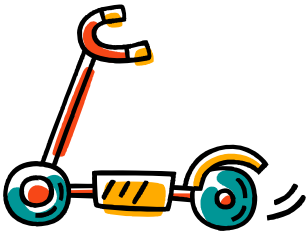
Dear Parents and Carers

We are continuing to focus on punctuality in school.

Some of you will be getting letters telling you how many times your child has been late. This is something we really need to improve, as a school.

Remember if your child arrives after 8:55am they are late for school, missing part of their lesson and disturbing other children's learning.

Scooters in the playground



Quite a few children have been riding their scooters in the playground recently and causing accidents or near misses. Please do not let your child do this. It is fine for them to come to school by scooter if they are properly supervised but they must not ride them in the playground.

Have you registered your child with our Children's Centre?

If you have a child under 5, please make sure you register so you can join in groups and activities at the Children's Centre.



Chinese New Year Lunch **Thursday 10th February**

Just a reminder that if your child normally has a packed lunch, but would like to have the Chinese New Year school lunch, you will need to **order and pay** for this by tomorrow. See letter sent home last week for more details.

Poppy Appeal

THE ROYAL BRITISH
LEGION



Thank you to everyone who made a donation to last year's Poppy Appeal.

The British Legion have notified us that we collected £140.90.

Parents drop-in sessions with the school nurse

The dates of the parents drop-in sessions for the remainder of this half term are Thursday 3rd February and Thursday 17th February.

The school nurse will be available in the Round Room from 2pm.

If there is anything you would like to discuss with her, please go to the Round Room at 2pm.
There is no need to book.

Dates for your diary

Thursday 3rd February—2pm Parents drop-in session with school nurse

Monday 7th February—Chinese theatre company to work with years 3, 4 & 5

Thursday 10th February—Chinese New Year school dinner

Thursday 17th February—2pm Parents drop-in session with school nurse

Thursday 17th February—Break up for half-term

Friday 18th February—INSET Day—**School & Children's Centre closed**

w/c 21st February—Half-term

Monday 28th February—Children return to school

w/c 7th March—Scholastic Book Fair

Tuesday 8th March—Shrove Tuesday—Pancakes for pudding! More details to come...

Children's Centre Information

A full timetable of our activities can be found in the file downloads area on the Tweeddale website
www.tweeddaleprimary.sutton.sch.uk

'Yoga for Toddlers' at Tweeddale Primary School

These fun (free) sessions are loosely based on yoga poses for children from 2 to 5 years old. Your child will learn about the world of our soft toy friend Tatty Bumpkin and join in her adventures on Wobble Farm!
Please be aware that there are only 6 spaces available each week, so remember to book your place by popping in to Tweeddale Children's Centre or by calling us on 020 8404 1640.

Every Monday from 2:00pm until 2:45pm

'Chatterbox' at Tweeddale Primary School

Chatterbox is a free drop in activity group for families who would like advice about how to support their child's speech and language development. We provide activities that enable you to play and talk with your child.
Every 6 weeks a Speech and Language Therapist will attend the group enabling you to raise any concerns you may have about your child's language development. This is specifically targeted at the under 5's.

Every Thursday from 1:45pm until 2:45pm