

Weekly Newsletter



Tweeddale Primary School
Wednesday 27th April 2011



Dear Parents & Carers

Welcome back! I hope you all had a good Easter break. Wasn't the weather kind to us? The next couple of weeks will be a bit strange with so many bank holidays, which are lovely to have, but a little disruptive - however, it'll be busy as usual when we are in school.

I need to remind you all that if your child is in Year 4, 5 or 6, and you want to see your child's teacher before school, you must come in to the office to make an appointment. Staff on the door are not allowed to let parents in through that entrance. Your co-operation, as always, is appreciated.

Road Safety

Once again, there was a "near miss" on Tweeddale Road before school yesterday. A child came close to being injured because of careless driving. I don't want to start the new term by nagging, but please remember to drive with care and attention, not to park on the zig-zag lines at the beginning and end of the school day, or on the crossing table.

We have permission to use Sutton Arena car park, so there is no need to park on the road. I do not want one of our children to be killed or injured outside school.

Royal Wedding Fun Day - Thursday 28th April

On Thursday, we will have our "Fun Day" to celebrate the Royal Wedding. Children can wear red, white and blue clothing (no football kits). The whole school will be having a picnic* together.

Each child will also be taking part in the sponsored circuit training. They will need to bring in their sponsor forms on Thursday, so that the teachers can sign to say they have completed the circuit. Sheets will then be given back to the children so they can collect the sponsorship money and bring into school as soon as possible.

Please remember that children will need to wear their PE kits to complete the circuit.

** School dinner children - if you replied that you would provide your child with a packed lunch on Thursday, your child's school dinner has already been cancelled, so please remember to send them with their packed lunch.*

Have you recently changed your home or mobile phone number?

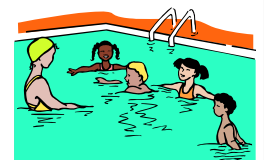
If you have, please remember to tell the school office in case they need to contact you in an emergency. Your mobile number is also used to send important text messages, eg if your child will be late back to school following a school trip or if an after school club is cancelled.

Sports Day - **27th June**

Don't forget to put the date in your diary - Foundation & Middle Phase in the morning; Upper Phase in the afternoon. Times to be confirmed.

Swimming Lessons

Swimming lessons start again next week. Please refer to the timetable already sent home for details of when your child will be swimming. Please make sure your child has their swimming kit in school on the right day. All children must wear a swimming hat. Swimming hats are available to buy from the school office at a cost of £1 each.



Parents drop-in sessions with the school nurse

Dates for parents drop-in sessions this half term are Thursday 28 April, Thursday 12 May and Thursday 26 May. The school nurse will be available in the Round Room from 2pm. If there is anything you would like to discuss with her, please go to the Round Room at 2pm. There is no need to book.



Dates for your diary

Thursday 28th April—Royal Wedding Fun Day

Friday 29th April—Bank Holiday for the Royal Wedding
(School, Children's Centre & Play Centre are closed)

Monday 2nd May—Bank Holiday (School, Children's Centre & Play Centre are closed)

w/c 9th May—Year 6 SATs

Monday 23rd May—Class photos

Friday 27th May—Year 1 visit Kew Gardens

Friday 27th May—School breaks up at normal time for half term


w/c 30th May—half term

Monday 6th June—INSET day—School, Children's Centre & Play Centre are closed

Tuesday 7th June—Children return to school

Monday 27th June—Sports Day

Children's Centre Information

A full timetable of our activities can be found in the file downloads area on the Tweeddale website www.tweeddaleprimary.sutton.sch.uk. You can also follow us on  www.twitter.com/TweeddaleCC

Baby Stay & Play

This is a fun stay and play group for children under 18 months old, where you can play with your child and meet other families.

**Every Friday 1:30-2:30pm at
The Circle Library**

Childminder drop in

This group is for all childminders and the children they care for. Enabling the exchange of fun ideas and offering support to one another.

You can also be supported with your EYFS planning, learn about the latest training opportunities in the London Borough of Sutton and join our Childminder Toy Library.

**Every Thursday 9:00am-10:30am at
Tweeddale Primary School**