



Dear Parents and Carers

**Incident In Tweeddale Road**

Those of you who have registered your e-mail address with us will have received a message about an accident in Tweeddale Road.

Please remind your children to only cross at the designated crossing points and not to come through the gap in the hedge on the Sutton Arena side.

**Crystal Palace  
FC Foundation  
Christmas Coaching**



CPFCF are running a number of football coaching schemes during the Christmas Holiday. The nearest is at Carshalton Boys College on Monday 22<sup>nd</sup> and Tuesday 23<sup>rd</sup> December.

Details are on our website or at [www.cpfoundation.org](http://www.cpfoundation.org)

**ParentComms app for Windows phones (Beta)**

Apple and Android phones are already able to access OpenCheck and other ParentComms services and there is now a Beta version app for Windows phones.

- All parents can access the OpenCheck service and subscribe to an information feed from their children's school(s)
- Subscribing to OpenCheck will result in automatic notifications if a school needs to close in an emergency.

When you have installed the app please log in either by registering your mobile phone number or your USO user account (if you have one). This type of account ends in .uso so if you have ever used the eAdmissions online application service then you have an account already.

To access the app, go to <http://www.windowsphone.com/en-gb/store/app/parentcomms-beta/d77e6374-d235-40b4-9f93-6799339f0ac5>

**Headteacher's Awards**

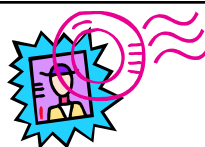
Harvey	Y3 Turtle	Making a great effort with homework and great progress in class
Lily	Y2 Panda	A Very Good Maths Investigation
Keano	Y3 Puffin	A Cracking Christmas Cracker
Holly	Y3 Puffin	A Cracking Christmas Cracker
Tia	Y3 Puffin	A Cracking Christmas Cracker
Gregory	Y1 Monkey	A Very Clear Instruction List
Thomas	Y1 Monkey	A Very Clear Instruction List
Leana	Y1 Monkey	A Very Clear Instruction List
Michael	Y2 Panda	A Silhouette Of A London Skyline
Harmony	Y2 Panda	A Silhouette Of A London Skyline



**Postage Stamps**

The school collects used postage stamps that are passed on to raise money for Great Ormond Street Hospital.

If you would like to donate your used stamps, please cut them from their envelopes and give them to the school office.



**Milk**

If your child wants milk in the Spring term, please make sure that you have notified the office and paid for the milk by the deadline of Friday 12th December.



Blue - Mo Farah  
973

Green - Sir Chris Hoy  
966

Red - David Weir  
886

Yellow - Victoria Pendleton  
771

### Class Attendance - w/c 17th November 2014

98.3% Puffin Class  
 98.1% Polar Bear Class  
 97.5% Turtle Class  
 96.8% Wombat Class  
 96.7% Kestrel Class




95.3% Jaguar Class  
 93.3% Eagle Class  
 92.7% Monkey Class  
 92.3% Cheetah Class  
 92.0% Panda Class



90.3% Badger Class  
 87.7% Ladybird Class  
 86.3% Hedgehog Class  
 81.7% Butterfly Class

### Dates for your diary

Monday 1st December ..... Cheetah Class trip - Globe Theatre  
 Tuesday 2nd December ..... AM - Parents drop-in with the school nurse  
 Jaguar Class trip - Globe Theatre  
 Thursday 4th December ..... 9:10am Monkey & Hedgehog Class assembly  
 Friday 5th December ..... After school - Christmas Fair  
 Wednesday 10th December ..... Badger & Panda Class trip to the Natural History Museum  
 Thursday 11th December ..... 9:00-11:00am Parents drop-in with family support worker  
 Friday 12th December ..... 10:30am Christingle - AM Nursery and Ladybird class  
 2:00pm Christingle - PM Nursery and Butterfly class  
 Monday 15th December ..... 5:30pm Christmas Performance - Years 1 & 2  
 Tuesday 16th December ..... AM - Parents drop-in with the school nurse  
 6:30pm Christmas Performance - Years 3 & 4  
 Wednesday 17th December ..... Whole School Christmas Dinner  
 6:30pm Christmas Performance - Years 5 & 6   
 Friday 19th December ..... Break up for Christmas holiday  
 Monday 5th January ..... INSET Day - School and Children's Centre are closed  
 Tuesday 6th January ..... Children return to school at normal time


### Term Dates 2014-2015

These are the London Borough of Sutton term dates for the 2014-2015 academic year. **Please note that INSET days are now included in these dates (with the exception of one which is still to be decided).**

Friday 19th December 2014	- Break up for Christmas	Monday 13th April 2015	- INSET Day
Monday 5th January 2015	- INSET Day	Tuesday 14th April 2015	- Children return to school
Tuesday 6th January 2015	- Children return to school	w/c 25th May 2015	- Half term (1 week)
w/c 16th February 2015	- Half term (1 week)	Friday 17th July 2015	- Break up for Summer
Friday 27th March 2015	- Break up for Easter	Monday 20th July 2015	- INSET Day



## Children's Centre Information

A full timetable of our activities and groups can be found in the file downloads area on the Tweeddale website [www.tweeddaleprimary.sutton.sch.uk](http://www.tweeddaleprimary.sutton.sch.uk). You can also follow us on  [www.twitter.com/TweeddaleCC](http://www.twitter.com/TweeddaleCC)

Contact the Centre on 020 8404 1640 or email [tweeddalechildrenscentre@suttonlea.org](mailto:tweeddalechildrenscentre@suttonlea.org)

**The U Courses** offer fun interactive sessions on useful life skills.

There are still two more courses to run this term:

**On Saturday 6th December (10:00-11:30am)**

**Build Your Networks** - will help you look at how to develop friendships and a personal network to support you in life.

**On Wednesday 10th December (10:00-11:30am)**

**Be A Lifesaver** - a session developed with the British Red Cross which covers what to do in the first few minutes of seven key emergencies.

We are offering a free crèche service for children under 5 years old.

Please contact Reception to be booked onto these courses.